



THREADED BALL VALVES



**FIELD PROVEN VALVES PROVIDING YEARS
OF COST EFFECTIVE, EFFICIENT, SAFE AND
RELIABLE SERVICE.**



THREADED BALL VALVES

Manufactured in compliance with:

- NACE MR0175
- ASME B16.34
- API 608

Optional Features:

- Antistatic device
- Actuation and square nut assessment
- Coating for corrosion resistant



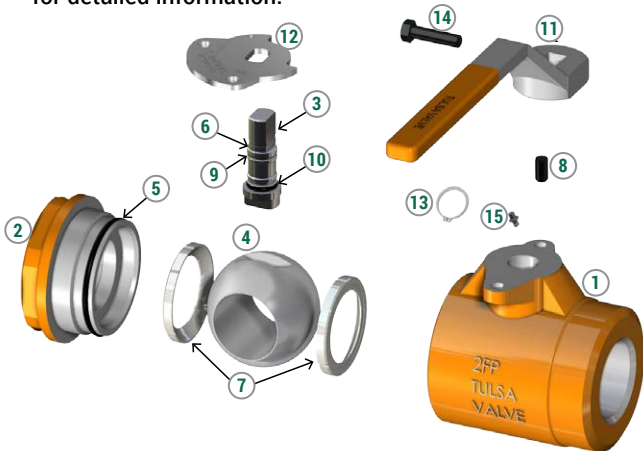
FEATURES

- Carbon Steel Ball Valves w/Stainless Steel Trim
- 1" thru 4" Size Range
- Carbon Steel: 1000 to 5000 WOG Pressure Range
- NPT Threaded Ends
- Full or Reduced Port
- Blow-out Proof Stem
- Locking Handle
- Meets NACE MR0175/ISO 5156

ISO 9001:2000 Certified
Certificate No. C2007-01814



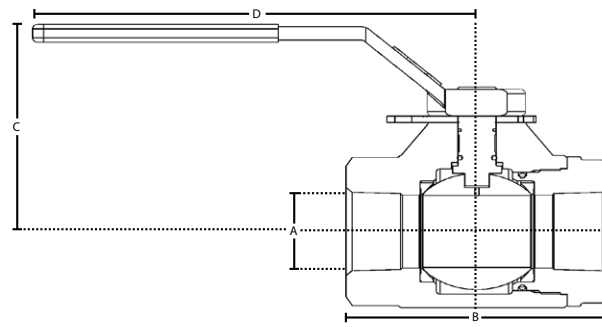
Threaded Ball Valves come in 1" thru 4" sizes. All of our Threaded Ball Valves conform to NACE MR0175 requirements. Our Threaded Ball Valves are full opening to ensure a very low pressure drop. Tulsa Valve performs 100% pressure testing on all of our Threaded Ball Valves. Please refer to the Tulsa Valve Threaded Ball Valves chart for detailed information.



MATERIAL SPECIFICATIONS		
	Part Name	Material
1	Body	WCB Carbon Steel
2	Adapter	WCB Carbon Steel
3	Stem	304 SS
4	Ball	410 SS
5	Body Seal	HNBR
6	Stem Bearing	Nylon
7	Seats	Delrin
8	Stop Pin	Alloy Steel
9	Stem Seal	HNBR
10	Thrust Bearing	Teflon
11	Handle	Ductile Iron
12	Stop Plate	Steel
13	Retainer Ring	Spring Steel
14	Handle Screw	Alloy Steel
15	Grease Zerk	Alloy Steel

*Spare parts can be purchased separately

SINCE 1992 WE HAVE BUILT OUR REPUTATION ACROSS THE OIL AND GAS INDUSTRY FOR PRODUCING VALVES WITH OUTSTANDING PERFORMANCE AND COMPETITIVE PRICING.



Dimensions for Guidance ONLY -
For Specific Dimension Contact Us.

DIMENSIONS / SPECIFICATIONS

Model Number	Working Pressure	Size		Bore FP/RP	A		B		C		D		Weight		Connection	
		inch	metric		inch	metric	inch	metric	inch	metric	inch	metric	LBS	KG		
12-11019FP	1000	1	25.1	FP	1.5	38.1	4.0	102.4	3.1	78.7	6.1	155.6	4.5	2.04	FNPT	
12-21019RP		2	50.8	RP	1.5	38.1	5.5	139.7	5.4	137.2	10.1	256.5	12.5	5.67	FNPT	
12-21019FP			50.8	FP	2.0	50.8	6.0	152.4	6.0	152.4	10.1	256.5	18	8.16	FNPT	
12-31019RP		3	76.2	RP	2.0	50.8	8.2	208.3	6.0	152.4	10.1	256.5	22	9.98	FNPT	
12-31019FP			76.2	FP	3.0	76.2	8.7	221.0	6.9	175.3	15.0	381.0	52	23.59	FNPT	
12-41019RP		4	101.6	RP	3.0	76.2	8.7	221.5	6.9	175.3	15.0	381.0	46	20.87	FNPT	
12-41019FP			101.6	FP	4.0	101.6	9.4	238.1	10.0	254.0	18.0	457.2	58	26.31	FNPT	
12-11519FP		1500	1	25.4	FP	1.5	38.1	4.0	102.4	3.1	78.7	6.1	155.6	4.5	2.04	FNPT
12-21519RP	2		50.8	RP	1.5	38.1	5.5	139.7	5.4	137.2	10.1	256.5	12.5	5.67	FNPT	
12-21519FP			50.8	FP	2.0	50.8	6.0	152.4	6.0	152.4	10.1	256.5	18	8.16	FNPT	
12-31519RP	3		76.2	RP	2.0	50.8	8.2	208.3	6.0	152.4	10.1	256.5	22	9.98	FNPT	
12-31519FP			76.2	FP	3.0	76.2	8.7	221.0	6.9	175.3	15.0	381.0	52	23.59	FNPT	
12-41519RP	4		101.6	RP	3.0	76.2	8.7	221.5	6.9	175.3	15.0	381.0	46	20.87	FNPT	
12-41519FP			101.6	FP	4.0	101.6	9.4	238.1	10.0	254.0	18.0	457.2	58	26.31	FNPT	
12-12019FP	2000		1	25.4	FP	1.5	38.1	4.0	102.4	3.1	78.7	6.1	155.6	4.5	2.04	FNPT
12-22019RP		2	50.8	RP	1.5	38.1	5.5	139.7	5.4	137.2	10.1	256.5	12.5	5.67	FNPT	
12-22019FP			50.8	FP	2.0	50.8	6.0	152.4	6.0	152.4	10.1	256.5	18	8.16	FNPT	
12-32019RP		3	76.2	RP	2.0	50.8	8.2	208.3	6.0	152.4	10.1	256.5	22	9.98	FNPT	
12-32019FP			76.2	FP	3.0	76.2	8.7	221.0	6.9	175.3	15.0	381.0	52	23.59	FNPT	
12-42019RP		4	101.6	RP	3.0	76.2	8.7	221.5	6.9	175.3	15.0	381.0	46	20.87	FNPT	
12-42019FP			101.6	FP	4.0	101.6	9.4	238.1	10.0	254.0	18.0	457.2	58	26.31	FNPT	
12-12519FP		2500	1	25.4	FP	1.5	38.1	4.0	102.4	3.1	78.7	6.1	155.6	4.5	2.04	FNPT
12-22519RP	2		50.8	RP	1.5	38.1	5.5	139.7	5.4	137.2	10.1	256.5	12.5	5.67	FNPT	
12-22519FP			50.8	FP	2.0	50.8	6.0	152.4	6.0	152.4	10.1	256.5	18	8.16	FNPT	
12-32519RP	3		76.2	RP	2.0	50.8	8.2	208.3	6.0	152.4	10.1	256.5	22	9.98	FNPT	
12-32519FP			76.2	FP	3.0	76.2	8.7	221.0	6.9	175.3	15.0	381.0	52	23.59	FNPT	
12-42519RP	4		101.6	RP	3.0	76.2	8.7	221.5	6.9	175.3	15.0	381.0	46	20.87	FNPT	
12-13019FP			3000	1	25.4	FP	1.5	38.1	4.0	102.4	3.1	78.7	6.1	155.6	4.5	2.04
12-23019RP	2			50.8	RP	1.5	38.1	5.5	139.7	5.4	137.2	10.1	256.5	12.5	5.67	FNPT
12-23019FP		50.8		FP	2.0	50.8	6.0	152.4	6.0	152.4	10.1	256.5	18	8.16	FNPT	
12-33019RP	3	76.2		RP	2.0	50.8	8.2	208.3	6.0	152.4	10.1	256.5	22	9.98	FNPT	
12-33019FP		76.2		FP	3.0	76.2	8.7	221.0	6.9	175.3	15.0	381.0	52	23.59	FNPT	
12-43019RP	4	101.6		RP	3.0	76.2	8.7	221.5	6.9	175.3	15.0	381.0	46	20.87	FNPT	
12-15019FP		5000		1	25.4	FP	1.5	38.1	4.0	102.4	3.1	78.7	6.1	155.6	4.5	2.04
12-25019RP	2			50.8	RP	1.5	38.1	5.5	139.7	5.4	137.2	10.1	256.5	12.5	5.67	FNPT
12-25019FP			50.8	FP	2.0	50.8	6.0	152.4	6.0	152.4	10.1	256.5	18	8.16	FNPT	



LEADERS IN THE VALVE INDUSTRY

Tulsa Valve is a USA based OEM for a wide range of commonly used valves. The increasing demands to design valves that are more efficient, along with ease of operation, have put Tulsa Valve into a leading position in the industry.



GUARANTEED AGAINST DEFECTS



Tulsa Valve products are guaranteed against defects of material workmanship for One (1) Year from date of invoice provided such products are used normally and within the service and pressure range for which they were manufactured. This guarantee is limited to the repair, replacement or repayment of purchase price. Under no conditions will Tulsa Valve be liable for claim of labor for removal, repair or replacement of Tulsa Valve products, or any other consequential damage.

HOUSTON, TEXAS

TEL: (281) 909-3711 • FAX: (281) 306-2526

WWW.TULSAVALVE.COM